



THE LIPCO GROUP

Lipco was formed in 1980 and operates from sites in Dorset, Hampshire and Bedfordshire.

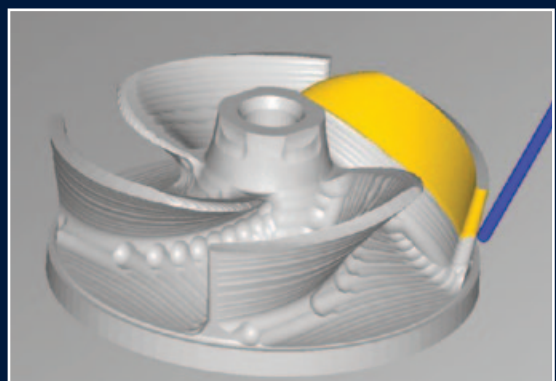
Lipco provides a highly skilled precision engineering service to Tier One companies within Aerospace, Defence, Oil and Gas, Automotive, Medical and Vacuum Industry sectors.

We have a dynamic corporate structure and an effective management team working in an innovative environment.

Our capabilities include, CAD, CNC milling (3, 4 and 5 axis), CNC turning, CNC grinding, welding, assembly and test; we have a very experienced workforce providing a competitive, comprehensive service and exceptional quality to meet with your requirements.

Some of the projects we are already involved with are; Eurofighter; Boeing 787 Dreamliner; and Airbus A380, A350 & A320neo.

Lipco are accredited to **AS9100; ISO 9001:2008; revision C**



OUR LIPCO VISION: TO GROW OURSELVES, OUR PEOPLE, OUR CAPABILITIES AND OUR ORGANISATION

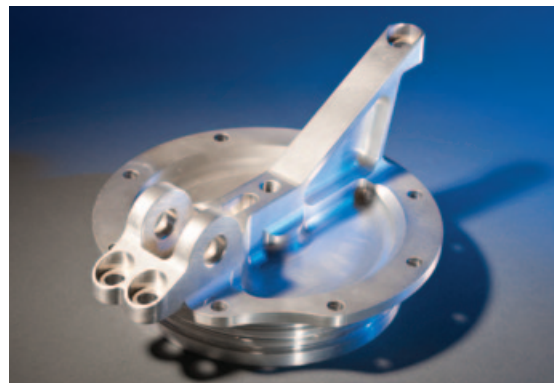


OUR INVESTMENT

Lipco Group is currently expanding... our Private Investors invested 2 million in 2011 on new machines.

Lipco acquired CVT Ltd in April 2011. The acquisition strengthened the Groups manufacturing expertise whilst making new opportunities available.

The strategy for 2012 is for Lipco to continue to invest and acquire.



ON-GOING STRATEGY

Lipco is currently developing a new customer base specifically for our New Product Introduction (NPI) "state-of-the-art" facility based in Dorset;

The NPI manufacturing unit will be a separate entity to our established, regular work.



UK MANUFACTURING

+44 (0) 1425 47 60 36

info@lipco.co.uk



CAPABILITIES

CNC Milling:

1x Matsuura 32 Pallet Mam72-35v - 5 Axis
Maximum Spindle Speed 15000 RPM

3x Hardinge Bridgeport - 5 Axis
Maximum Spindle Speed 12000 RPM

1x Hardinge Bridgeport - 4 Axis
Maximum Spindle Speed 12000 RPM

1x Bridgeport VMC 1000 - 5 Axis
Maximum Spindle Speed 10000 RPM

1x Bridgeport VMC 1000 - 4 Axis
Maximum Spindle Speed 10000 RPM

1x Bridgeport VMC 800 - 4 Axis
Maximum Spindle Speed 7000 RPM

5x Bridgeport VMC 600 - 4 Axis
Maximum Spindle Speed 6000 RPM

1x Bridgeport VMC 500 - 3 Axis
Maximum Spindle Speed 5000 RPM

DMG Heidenhein iTNC 530 Control
DMU 125P3 5-Axis Machining Centre

Software:

CAD 3D Delcam Powershape
CAD 2D Solidworks 2012
CAM Delcam Powermill
CadCAM Mastercam X6

CNC Turning:

2x Mazak Super Quick Turn 250 - 2 Axis

1x Mazak Nexus 250 - 2 Axis

1x Mazak Quick Turn 100 - 2 Axis

2x Mazak Quick Turn 15 - 2 Axis

CNC Grinding:

1x Jones & Shipman Universal CNC Grinding - 2 Axis
340 Diameter X 1000 Long

CNC Mill/Turn:

1x Mazak Integrex i200 - 5 Axis
36 Tool Magazine Station With 10 inch Chuck

3x Mazak Quick Turn Nexus 250-11MY - 3 Axis
12 Station Turret With Driven Tools

Manual Machines:

1x Colchester Master 3250 Lathe - 2 Axis

1x Colchester Master 2000 Lathe - 2 Axis

1x Bridgeport Milling Machine - 2 Axis

Inspection:

1x Hexagon Dea Global CNC Co Ordinate Measuring Machine

1x Hexagon Mistral CNC Co Ordinate Measuring Machine

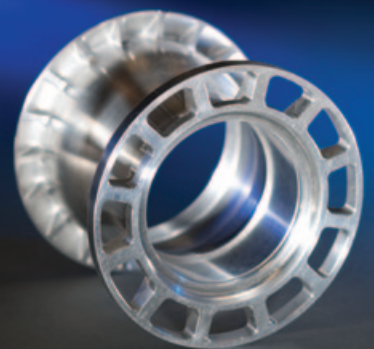
1x Hexagon Dea Global CNC Co Ordinate Measuring Machine
With DMIS CAD + Software

2x Manual Mitutoyo Measuring Machines

One With Delcam Power Inspect Software

“THANK YOU FOR THE EFFORT AND ASSISTANCE YOUR COMPANY HAS SO FAR PROVIDED IN SUPPORTING THE A380 PROGRAMME. BY NATURE, DEVELOPMENT PROGRAMMES ARE EXTREMELY TIME CONSUMING AND REQUIRE A GREAT DEAL OF FLEXIBILITY.”

Louisa Chatting, Head of Procurement FR – HiTEMP Limited



UK MANUFACTURING

+44 (0) 1425 47 60 36

info@lipco.co.uk

**Lipco Aerospace Limited
Head Office**

Unit 81 Condor Close
Woolsbridge Industrial Park
Three Legged Cross, Wimborne
Dorset BH21 6SU

Tel: +44 (0) 1425 47 60 36

Fax: +44 (0) 1425 47 55 27

Web: www.lipco.co.uk

Email: info@lipco.co.uk

Lipco Engineering Limited

Forest House
Hightown Industrial Estate
Ringwood
Hampshire
BH24 1ND

Tel: +44 (0) 1425 47 60 36

Fax: +44 (0) 1425 47 55 27

Web: www.lipco.co.uk

Email: info@lipco.co.uk

CVT Limited

4 Carters Lane
Kiln Farm
Milton Keynes
MK11 3ER

Tel: +44 (0) 1908 56 32 67

Fax: +44 (0) 1908 56 83 54

Web: www.cvt.ltd.uk

Email: sales@cvt.ltd.uk

Lipco Engineering Limited

Unit 80 Condor Close
Woolsbridge Industrial Park
Three Legged Cross, Wimborne
Dorset BH21 6SU

Tel: +44 (0) 1425 47 60 36

Fax: +44 (0) 1425 47 55 27

Web: www.lipco.co.uk

Email: info@lipco.co.uk